

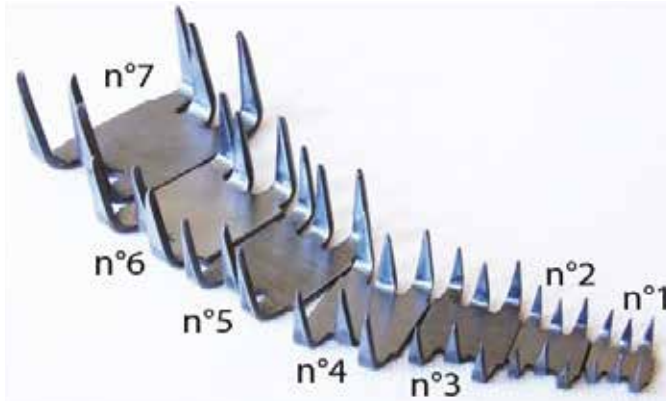
Conveyor Belt Repair Products

22 - 32

- 2.1 Rip repair fasteners
- 2.2 Bolt plate fasteners
- 2.3 Repair patches
- 2.4 Repair strips
- 2.5 FA - 60SL Urethane repair compound
- 2.6 Super screw repair
- 2.7 Fix'N Go

2.1 - Rip repair fasteners

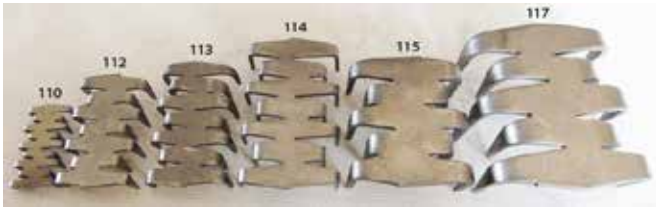
- Advantages :**
- ◆ Tear or rip repair
 - ◆ Quick easy Installation



6 Point Fasteners

Part No.	Size	Belt thickness mm
4105200001	N° 1	4 - 6
4105200002	N° 2	6 - 8
4105200003	N° 3	8 - 10
4105200004	N° 4	10 - 13
4105200005	N° 5	13 - 16
4105200006	N° 6	16 - 19
4105200007	N° 7	19 - 22

Multi-point fasteners



Part No.	Size	Belt thickness mm
4105000110	N° 110	3 - 4
4105000112	N° 112	6 - 8
4105000113	N° 113	8 - 9.5
4105000114	N° 114	9.5 - 11
4105000115	N° 115	11 - 14.5
4105000117	N° 117	14.5 - 17.5

1 Box = 2 Meters Rip Repair

INSTALLATION



Rip



Hammer



Top



Bottom

Tool Items Required

Part No.	Description
4042991294	Engineering Hammer # 25, Weight 300 gram

2.2 - Bolt plate fasteners



Part No.	Size	Belt thickness mm	Max.belt strength N/mm	Mini. Pulley mm	Qty per box
4100000001	N° 1	5 - 11	315	250	25
4100000140	N° 140	5 - 11	400	300	25
4100000190	N° 190	8 - 14	630	400	25
4100000015	N° 1 1/2	11 - 17	500	400	25
4100000002	N° 2	14 - 21	800	700	25
4100000025	N° 2 1/2	19 - 25	800	1000	10

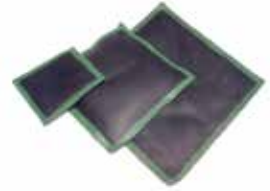
Note : See below for Installation tools.

Tools and accessories for bolt plate fasteners.

4044800095 4044800094 4044800096	Manual punch		Fasteners N° 1, 140 & 190 N° 1 1/2 & 2 N° 2 1/2 & 3
4044800002 4044800001 4044800003	Manual wrench		Fasteners N° 1, 140 & 190 N° 1 1/2 & 2 N° 2 1/2 & 3
4044800130 4044800131 4044800132	Power wrench for screw driver		Fasteners N° 1, 140 & 190 N° 1 1/2 & 2 N° 2 1/2 & 3
4044800098 4044800097 4044800099	Bolt breaker		Fasteners N° 1, 140 & 190 N° 1 1/2 & 2 N° 2 1/2 & 3
4044800134 4044800135	Power punch for drilling machine		Fasteners N° 1, 140 & 190 N° 1 1/2 & 2
4040000013	Makita Cordless driver drill 13mm, 18 volt delivered with 2 batteries Li-Lon 3 Ah in box; weight 2,3 Kg		

2.3 - Repair Patches

Part No.	Description	Dimensions	Unit
3650001600	Repair Patch 1	160 mm x 130 mm x 2.4 mm	per pcs.
3650002600	Repair Patch 2	260 mm x 200 mm x 2.4 mm	per pcs.
3650003600	Repair Patch 3	360 mm x 270 mm x 2.4 mm	per pcs.
365000160R	Repair Patch 1 with fabric	160 mm x 130 mm x 3.8 mm	per pcs.
365000260R	Repair Patch 2 with fabric	260 mm x 200 mm x 3.8 mm	per pcs.
365000360R	Repair Patch 3 with fabric	360 mm x 270 mm x 3.8 mm	per pcs.



2.4 - Repair Strips

Part No.	Description	Dimensions	Unit
3660000070	Repair Strip 0	2,2 mm x 70 mm x 10 mm	per pcs.
3660001000	Repair Strip 1	2,2 mm x 100 mm x 10 mm	per pcs.
3660001500	Repair Strip 2	3,2 mm x 150 mm x 10 mm	per pcs.
3660002200	Repair Strip 3	3,2 mm x 220 mm x 10 mm	per pcs.
366000100R	Repair Strip 1 with fabric	3,6 mm x 100 mm x 10 mm	per pcs.
366000150R	Repair Strip 2 with fabric	4,6 mm x 150 mm x 10 mm	per pcs.
366000220R	Repair Strip 3 with fabric	4,6 mm x 220 mm x 10 mm	per pcs.



Example



Note : For the above repair patch / strip Installation you required glue and consumables, see suggested items at the bottom of this page.

Tools + Items required to install the repair strip/patches

Part No.	Description
4042991284	Disc, semi rigid dia 125k 16(Rubber)
4042991255	Angle Grinder 5" 1400w, dia 125mm
5959125	Cleaning Solution R4, 800 ml
3150701935	Rubber primer FA 900E 800grams with hardener 35 gram
4042991138	Brush flat, Paint Brush 50mm width

2.5 - Belt Repair System - FA-60SL Urethane repair compound

The easiest and Fastest Belt Repair System

General :

FaBa's FA-60SL is a two part 100% solids FA 60SL compound for the repair of rubber, PVC conveyor belts, tires and lining. FaBa's FA-60SL is odor free and non-toxic. It is chemical and abrasion resistant in most applications. The material cures to touch in 2 minutes and can be buffed after two hours.

Description and advantages:

FaBa's FA-60SL is packed in 2 x 200 ml two part cartridges and uses a unique dual plunger dispensing gun. The special mixing tips have a baffle system that mixes the material as it is dispensed.

- Cures to touch in two minutes. Can be buffed in 2 hours, minimum waiting time.
- 100% solids means No shrinkage. No VOC's, so safe to use.
- Shelf life 1 year unopened. Use only what you need, save the rest for up to 60 days after opening.
- Standard system is Self Leveling (FA-60SL), for vertical application a high viscosity version is available (FA-60NS).

Applications:

- Conveyor belt repair
- Pulley repairs
- Replacing filler rubber for cold splices
- Skirt board damage
- Covering fasteners
- Cleat repair
- Tyres



FA-60SL starters kit, Part no. 2040000020



Belt repair example

Physical Properties

Color	: Black
Elastomer	: FA-60SL Urethane
Elongation	: 500%
Hardness	: 60° shore A
Abrasion Resistance	: < 120mm ³

Part No.	Description
2040000020	FA-60SL Starter kit comprising : 1xdispensing gun, 6 x dual cartridges (200 x 200ml), 12 additional mixing tips, instruction manual
2040000021	FA-60SL dual cartridge(200 x 200ml) including one mixing tip
2040000025	FA-60SL Refill Kit, 6 x dual cartridges(200 x 200ml), 12 additional mixing tips, Instruction manual
2040000030	Mixing tip, per piece
2040000050	Mixing tip, set of 25 pieces
4050000010	Dispensing gun, for FA-60SL
3150701935	Rubber Cement - FA 900 E + Hardener

2.6 - Super Screws Repair Example

PATCH & REPAIR WITH SUPER-SCREW®



1. Draw on the belt, an outline of the Super-Screw® around the tear. The outline should be significantly larger than the tear.



2. Make a slight cut on the outline. Avoid to cut through the fabric ply.



3. Remove the rubber on the inside of the outline (Top cover).



4. Place the upper part of the Super-Screw® on the recessed surface. Screw the two holes from one end. Do not tighten fully.



5. Place the bottom part of the Super-Screw® on 2 protruding screws points. Screw these 2 screws fully down.



6. Screw entirely the Super-Screw® with appropriate screws.



Longitudinal rip repair



Side edge repair



Bridge repair
old belt with new belt

Please see page 42 - 65 for Superscrew

2.7 - Fix'N Go

FIX'N GO® what is it ?

The unique solution to repair, easily and provide a quick and permanent solution for your conveyor belts.

A flexible repair solution to screw !

FIX'N GO® is an innovative and quick solution to repair rips or damages on conveyor belts.

Your problem

- Longitudinal rip
- Crosswise rip
- Belt edge rip
- Holes, tears
- Splicing 2 belts together in the longitudinal direction

Your solution

To resolve these situations, the MLT teams have created a unique and innovative repair's solution for conveyor belts : FIX'N GO®.

Made with a strengthened fabric and a rubber with a very high abrasion index of 50mm³, FIX'N GO® offers a higher protection against frictions and wear than your conveyor belt used, without impacting its flexibility, resistance to elongation and tensile strength.

By repairing your belt with FIX'N GO®, you use a permanent solution with no need to replace it in the future.

The FaBa specific screws are self-drilling and self tapping: the carcass threads are spread without being cut.

FIX'N GO® can be used to repair longitudinal rips, holes and belt edge damages.

FIX'N GO® can also be used to splice two belts in the longitudinal direction.

FIX'N GO® is usable for all multi-ply and mono-ply textile carcass belts, up to 1250 N/mm.

1 Product for all applications

Benefits :

- **High resistant product** against rip and regular impacts
- **Easy and quick installation**
- No need for specialised tools, just a powered driver and a belt skiver are necessary
- **Compatible with small pulley diameter**
- **Installation regardless of the access conditions**, weather conditions (rain, snow, wind, cold weather...) during the day or the night
- **Safe product: no need of dangerous products** like adhesives or chemical products harmful to health
- **Compatible** with belt scrapers or cleaners
- **A unique product** for all your belts and all your repairs

Applications :

- **Mines**
- **Cement plants**
- **Quarries**
- **Heavy industries**
- **And other...**
- **Repair of mono-ply and multi-ply** belts up to 1250 N/mm
- **4 versions of rubber** are available

Versions of rubber available : FIX'N GO® in all applications

FIX'N GO® offers you a repair of your damaged belts, no matter what your sector of activity and your needs.
FIX'N GO® is available in many versions and with two kinds of screws and inserts :

Steel screws and inserts

High resistance, it's the perfect choice for most situations.

Quarries, Cement plants, Mines, and so on

Stainless steel screws and inserts

A resistance in corrosive and saline environment.

Goldmines, Phosphate, and so on

Abrasion resistant

FIX'N GO® made with abrasion resistant rubber can be used in almost all applications



Heat retardant

FIX'N GO® is suitable with your heat retardant belts and can resist up to 170°C and up to 200°C flash



Fire-resistant

FIX'N GO® fabricated with a fire-resistant covering ISO 340 and ISO 284 is a security for you in your mines and silos



Oil resistant

FIX'N GO® is also available with an oil resistant covering which resists against oils and solvents



For each belt, skive the top cover with a blade of 4.5mm (or 6.5mm) and the bottom cover with a blade of 2.5mm

Two kits of FIX'N GO® :

First emergency kit (2 meters) :

- 2 meters of FIX'N GO® (the top and bottom parts)
- 2 x 300 screws (2 different sizes)
- Installation kit (10 longer screws + PZ bit)

Professional kit (20 meters) :

20m of FIX'N GO® (1 roller for the top part and 1 for the bottom part)
With 3000 screws as following :

Abrasion resistant pack, fire resistant and oil resistant

- 600 screws 5 x 10 mm
- 900 screws 5 x 12 mm
- 600 screws 5 x 14 mm
- 300 screws 5 x 16 mm
- 300 screws 5 x 18 mm
- 300 screws 5 x 20 mm
- Installation kit (over-length screws + PZ bit)

Heat retardant pack

- 1050 screws 5 x 12 mm
- 900 screws 5 x 14 mm
- 450 screws 5 x 16 mm
- 300 screws 5 x 18 mm
- 300 screws 5 x 20 mm
- Installations kit (over-length screws + PZ bit)

Installation method : Install your FIX'N GO® easily !



You need :

- 1 powered driver
- 1 belt skiver with blades of 2.5mm and 4.5mm (or 6.5mm)
- Belt marking pen
- Knife



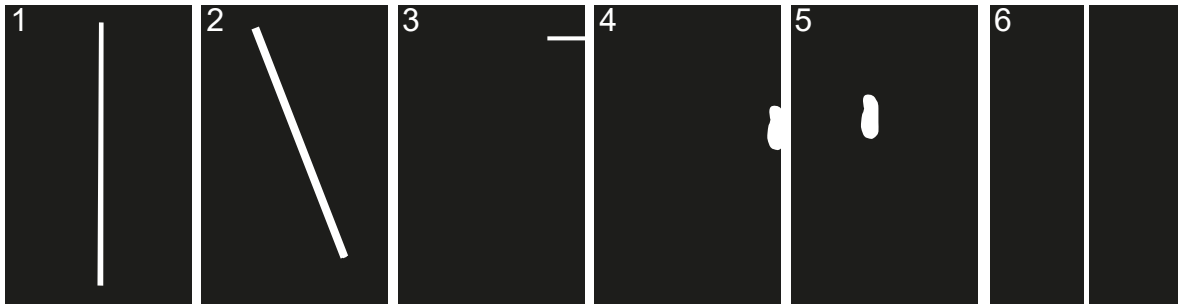
- Always cut the patch FIX'N GO® following the inserts
- The installation is completed on a wood work station



Information

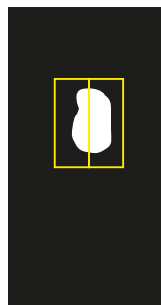
In which situation can we use FIX'N GO® ?

- 1 Longitudinal rip
- 2 Crosswise rips under 50% of the belt width
On each side, you must have 20% of the belt width
- 3 Belt edge damage under 20% of the belt width
- 4 Hole up to 10 cm wide in the edge of the belt (more than 3 cm : fill the hole before with a piece of used belt)
- 5 Hole up to 20cm wide : (more than 3 cm : fill the hole before with a piece of used belt)
- 6 Splicing of 2 belts together in the longitudinal direction (have 2 rows of screws on each side)



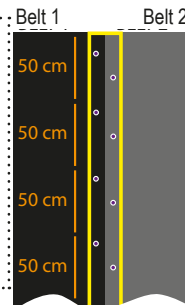
LEGEND

- Conveyor belt
- Hole / rip
- FIX'N GO®
- screws



If the hole is larger than FIX'N GO® :

Put side by side 2 widths of FIX'N GO®. These pieces will be installed along the direction of travel.



When longitudinally joining two belts :

Screw every 50cm on each belt. Alternate the screwing over the entire length.

Abrasion Resistant		
Part No	Screw Size	Description
5400005102	5x10, -5x12	Fix'N Go, 2 Meters Length, Repair
5400005124	5x12, -5x14	Fix'N Go, 2 Meters Length, Repair
5400005146	5x14, -5x16	Fix'N Go, 2 Meters Length, Repair
5400005168	5x16, -5x18	Fix'N Go, 2 Meters Length, Repair
5400005180	5x18, -5x20	Fix'N Go, 2 Meters Length, Repair

Heat Retardant		
Part No	Screw Size	Description
5400805124	5x12, -5x14	Fix'N Go, 2 Meters Length, Repair
5400805146	5x14, -5x16	Fix'N Go, 2 Meters Length, Repair
5400805168	5x16, -5x18	Fix'N Go, 2 Meters Length, Repair
5400805180	5x18, -5x20	Fix'N Go, 2 Meters Length, Repair

FaBa – it's also metallic fasteners, flexible splices, tools, endless and spliceless technical belts



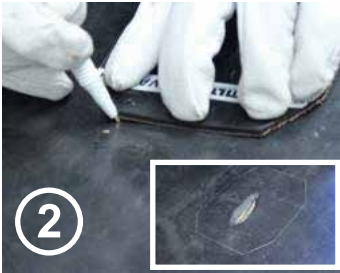
**Innovative products,
easy to install !**

On the top part...



Cut your FIX'N GO® so that there is at least 2 rows of screws around the tear.

See box above.



Cover the top part of FIX'N GO® on the tear.

Mark the outline with a pen.

Avoid inserting the screws of FIX'N GO® in the tear.



Mark out the outline with the knife.
Don't touch the ply of the belt



Skive the zone with the full belt blade of 4.5mm (or 6.5mm retardant covering)

Advice : begin with the edges (following your mark)



Screw some over-length screws (included in the installation kit)



Align the bottom part of FIX'N GO® with these screws

On the bottom side...



Mark the outline of FIX'N GO® with a belt marking pen.



Remove the over-length screws



Mark out the outline with a knife
Don't touch the ply of the belt



Skive using the blade 2.5mm



Put the bottom part of FIX'N GO® in its placement.
Screw all screws alternating sides and rows



Screw the 4 corners