

Bucket Elevator parts

67 - 89

- 4.1 Bucket elevator belts
- 4.2 Buckets
- 4.3 Bucket elevator clamp
- 4.4 Belt + bucket fixings

4.1 - Bucket elevator belts

Belt Selection Table



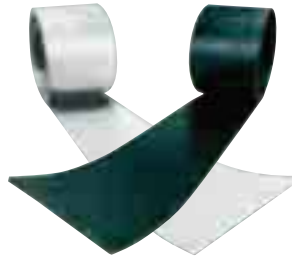
SBR

4B Standard SBR Elevator Belt EP
SBR - LOW STRETCH

Products without oil or fat. For very abrasive materials use 2+2mm covers

70°C

3



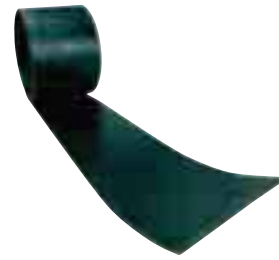
NBR

4B Standard NBR Elevator Belt
EP NBR - LOW STRETCH

Products with oil or fat.

80°C

4



FRASOR

4B Flame Retardant, Anti Static
Elevator Belt EP-FRAS, Moderately
Oil Resistant Elevator Belt ISO
340/284

Potentially flammable products

80°C

5



FDA

4B White Food Quality Belt EP
NBR-FDA

Food applications. Suitable for
products containing oils and fats

80°C

7



T150

4B High Heat Belt EP-T150

Hot industrial products

150°C

8



STEEL WEB

4B Steel Web Belt

Tall high capacity elevators
handling hot industrial materials

130°C

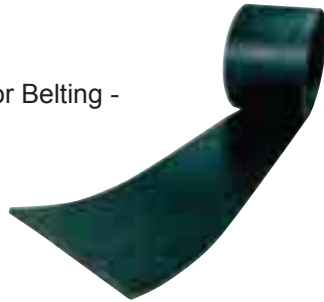
9

The materials used in the construction of the standard SBR and NBR belting have been designed to suit the particular demands of an elevator belt:

- Greater strength and bolt holding achieved with fewer plies
- Greater strength with less belt weight
- Increased belt strength with fewer plies permits the use of smaller pulley diameters
- No belt rot - the textile carcass is unaffected by moisture

SBR

Low Stretch Elevator Belting -
Abrasion Resistant



Low Stretch Laminated Elevator Belt

Elevator belting is of laminar construction, to give high impact resistance coupled with low stretch at working tension.

The EP carcass comprises a woven textile construction having low stretch polyester fabric warp (along its length) and impact resistant polyamide fabric weft (across the width).

The low stretch characteristics of the belt are achieved using the high strength textile fabric which is pre-tensioned during the manufacturing process. This process limits the maximum stretch in the belt, at working strength, to 1.5%.

Higher Strength Belts - EP1000 - EP2000 kN/m available on request

Low Stretch Laminated Elevator Belt

Technical Specifications

Applications: For fat and oil free products up to 70°C

Covers: SBR Styrene Butadiene Rubber

Carcass : Polyester fabric warp and polyamide fabric weft plies (EP) separated by 0.3mm thick synthetic rubber laminates of SBR

Temperature

Range: -20°C to +70°C

Standard: Manufactured to BS 490, DIN 22102 and DIN 22104 standard

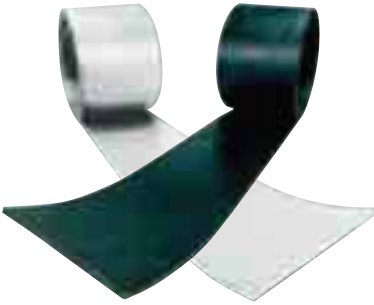
Type		EP500/3 1+1 SBR	EP630/4 1+1 SBR	EP630/4 2+2 SBR	EP800/5 1+1 SBR
Strength per ply	kN/m	160	160	160	160
Number of plies	-	3	4	4	5
Total Tensile Strength	kN/m	500	630	630	800
Maximum Working Tension (10:1 Safety Factor)	kN/m	50	63	63	80
Top & Bottom Cover Thickness	mm	1.0	1.0	2.0	1.0
Belt Thickness	mm	5.0	7.0	8.5	7.0
Weight	kg/m ²	6.5	7.0	10.0	7.5
Minimum Pulley Ø	mm	300	400	400	400
Max. Bucket Projection					
- Light Materials e.g. cereals	mm	180	200	215	215
- Industrial Materials	mm	-	-	185	185

NBR

Low Stretch Laminated Elevator Belt

NBR Nitrile provides good resistance to oil and fat. Suitable for products containing oils and fat up to 80°C.

Low Stretch Elevator Belting - Oil Resistant



Low Stretch Laminated Elevator Belt Technical Specifications

Applications:	For products containing oils and fats up to 80°C
Covers:	NBR 100% Nitrile Butadiene Synthetic Rubber
Carcass:	Polyester fabric warp and polyamide fabric weft plies (EP) separated by 0.3mm thick synthetic rubber laminates of 100% Nitrile
Temperature	
Range:	-20°C to +80°C
Standard:	Manufactured to BS 490, DIN 22102 and DIN 22104 standard

Type	EP500/3 1+1 NBR	EP630/4 1.5+1.5 NBR	EP800/4 2+2 NBR	EP1000/5 2+2 NBR
Strength per ply	kN/m 160	160	200	200
Number of plies	-	3	4	5
Total Tensile Strength	kN/m 500	630	800	1000
Maximum Working Tension (10:1 Safety Factor)	kN/m 50	63	80	100
Top & Bottom Cover Thickness	mm 1.0	1.5	2.0	2.0
Belt Thickness	mm 5.0	7.0	8.0	10.0
Weight	kg/m ² 6.5	8.7	9.7	11.3
Minimum Pulley Ø	mm 300	400	400	500
Max. Bucket Projection				
- Light Materials e.g. cereals	mm 180	200	215	250
- Industrial Materials	mm -	185	185	215

FRASOR

ISO 340/284

ISO 340/284 Flame retardant, anti-static and oil resistant belt

Recommended for use in equipment/installations where there is a risk of fire or explosion. Suitable for handling cereals and products with moderate levels of oil, such as soya.

Flame Retardant, Anti-static and Oil Resistant belt



ISO 340/284 Flame retardant, anti-static and oil resistant belt

Technical Specifications

- Flame retardant ISO 340/EN20340 (DIN 20340)
- Anti-static ISO 284/EN20284 (DIN 20284)
- Moderate resistance to vegetable and animal oil
- Temperature range: -20°C to +80°C
- Shore hardness: 65 +/- 5
- Abrasion resistance ISO 4649 NFT 46012
DIN 53516 135mm³

Type	EP315	EP400	EP500	EP630	EP800	EP1000	
Number of plies	-	2	3	3	3	4	4
Total Tensile Strength	kN/m	315	400	500	630	800	1000
Maximum Working Tension (10:1 Safety Factor)	kN/m	32	40	50	63	80	100
Top & Bottom Cover Thickness	mm	2.5+1.5	2.5+1.5	2.5+1.5	2.5+1.5	2.5+1.5	2.5+1.5
Belt Thickness	mm	6.2	6.8	8.1	8.7	10.3	10.9
Weight	kg/m ²	7.4	8.2	9.7	10.4	12.4	13.1
Minimum Pulley Ø	mm	300	300	400	500	630	800

FDA

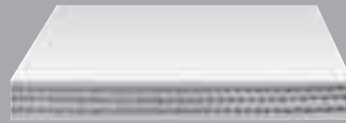
White food quality belt

NBR, FDA, PLY, White Food Quality belts are designed for use in the food industry.

This belt quality has very good oil and fat resistance and meets the requirements for components in contact with food stuffs.

Used widely with rice processing, flour mills, dry milk products, salt, sugar and detergents etc.

NBR - WHITE NITRILE - FDA



Type		EP500	EP630	EP800	EP1000
Number of plies	-	3	3	4	4
Total Tensile Strength	kN/m	500	630	800	1000
Maximum Working Tension (10:1 Safety Factor)	kN/m	50	63	80	100
Top & Bottom Cover Thickness	mm	1.5+1.5	1.5+1.5	2+2	2+2
Belt Thickness	mm	7.1	7.2	10.2	10.4
Weight	kg/m ²	8.4	8.5	12.1	12.3
Minimum Pulley Ø	mm	300	400	400	500

White food quality belt

Technical Specifications

Constructed with Polyester/Polymide plies with low elongation characteristics.

- Temperature Range -20°C to +80°C
- Resistant to acids and lyes in low concentration
- Approved FDA USDA section 21-177-2600, DIN 22102 EGA
- E = Anti-static DIN 22104
- G = Fat resistant
- A = Food quality
- Elongation at maximum working load 2.0%



T150

HIGH HEAT BELT



Type T150 high heat belt

Suitable for applications in elevators handling products of up to 150°C and short peaks of 180°C.

Used in the cement, coal, dry chemicals, fly ash industries. Use special 3+3 covers to prevent heat reaching the carcass.



Type	Thickness (mm)	Weight (kg/m ²)	Minimum Pulley Ø (mm)
EP800/4 3+3 NBR T180	9.5	10.6	500

Type T150 high heat belt

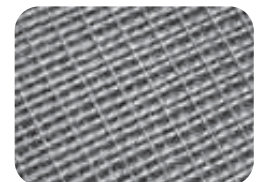
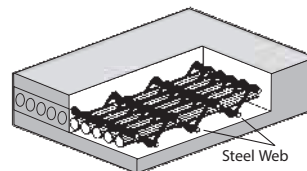
Technical Specifications

Product Norm: DIN 22102 ETY

- E = anti-static DIN 22104
- T = heat resistant up to 150°C, EPDM covers and plies resistant to mineral oils at low temperatures, resistant to acids and lyes in low concentrations
- Y = good abrasion resistance according to DIN 53516
- Elongation at maximum recommended working load 2.5% at high temps

Steel Web

STEEL WEB BELT



Standard range	Covers	Belt thickness	Minimum Pulley Ø	Approx weight
	(mm)	(mm)	(mm)	(kg/m ²)
SW 800	3+3	12.0	500	18.0
SW 100	3+3	12.0	500	18.7
SW 1250	3+3	13.0	630	21.0
SW 1400	4+4	15.0	630	24.5
SW 1600	4+4	15.0	630	25.0
SW 1800	4+4	15.0	630	25.5
SW 2000	4+4	15.0	800	26.0
SW 2500*	5+5	18.0	800	32.5

* On special or der

Other types on demand:

Type 1 - highly abrasion resistant with a maximum service temperature of 100°C

Type 2 - abrasion resistant with a maximum service temperature of 130°C. Continuous short peaks at 150°C

Type 3 - oil and fat resistant, anti static and flame retardant ISO 340

4.2 - BUCKET Selection Guide

Property	Mild Steel	Stainless 304	Stainless 316	HDP	Nylon 6	Reinforced Nylon	Polyurethane	Nyrim
Cost	1	3	4	1	2	3	4	4
Wear Resistance	3	4	4	1	2	3	3	4
Impact Resistance	2	2	2	1	2	3	2	4
Non-Stick	1	3	3	2	3	3	4	3
FDA Food Approved	X	✓	✓	✓	✓	✓	X	X
Max Temp°C Continuous #	180+	250+	250+	70	100	110	60	110
Max Temp°C Peak #	200	400	400	80	120	130	70	130
Colour	Grey	Silver	Silver	White	Cream	Beige	Green*	Drak Grey

Code 1 = Low 4 = high

* Other colours on request

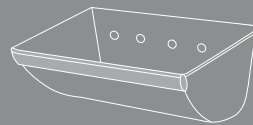
Material/Applications

Mild Steel General purpose, long life, cereals and industrial products
 Stainless 304 Food, corrosive and high temperature products
 Stainless 316 Food, highly corrosive and high temperature products
 HDP Cereals and food products

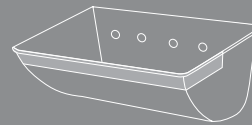
Nylon 6 Hot, abrasive and sticky products
 Reinforced Nylon Hot, highly abrasive and sticky industrial products
 Polyurethane Sharp, cutting and sticky products
 Nyrim Extremely abrasive, high impact industrial products

Options

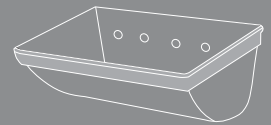
All our buckets can be punched to the customers own specification. The following options may be applied to any of our buckets.



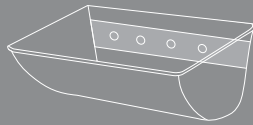
Front Only.



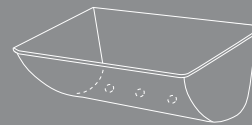
Front and part sides.



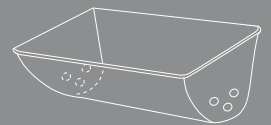
Front and full sides.



Rear reinforcing plate.



Bottom Drain Holes.



Side Drain Holes

How to measure a bucket



With elevator bucket back laid flat, measure overall length (A).



With elevator bucket back laid flat, measure the horizontal projection of the elevator bucket (B).



With elevator bucket back laid flat, measure back height (C).

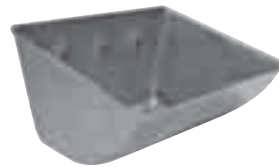
CONTENTS / Product Suitability Key:



SUPER TYPE S
Steel
Agricultural & Industrial



SUPER TYPE S
HDP/Nylon/Polyurethane
Agricultural & Industrial



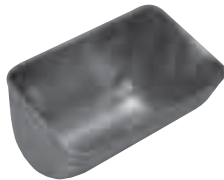
TYPE S JUMBO
Steel
Industrial



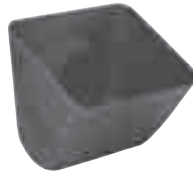
CONTINENTAL DIN 15233
Steel
Industrial



B TYPE
Medium Pattern
Agricultural & Industrial



C TYPE
Medium Deep Pattern
Agricultural & Industrial



D TYPE
Deep Pattern
Industrial



F TYPE
Angle Back Pattern
Industrial



ATLAS AA
Nylon Zytel
Industrial/Sticky



ATLAS MF
Nylon Zytel
Industrial



ATLAS AD
Nyrin
Industrial/Sticky



POLYPENCO
Nylon
Industrial/Sticky



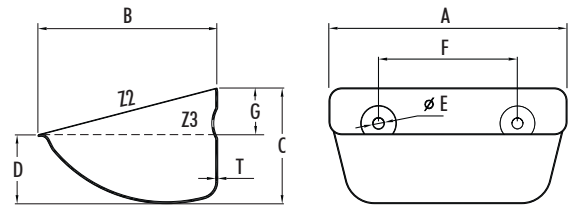
BUDD AA
Nylon
Industrial/Sticky

TYPE S

The original Type S Low Profile Elevator Bucket System - a bucket design for higher capacity at closer bucket spacing.

- Higher capacity: up to 100% capacity increase for existing elevators
- More flexibility: operates effectively over a wide speed range (from 1.25 m/s to 4.55 m/s)
- Unique stream discharge pattern: reduces product damage and dust

Pressed Seamless Steel /
Stainless Steel / Galvanised

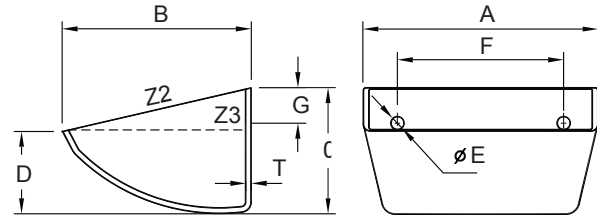


No.	A (mm)	B (mm)	C (mm)	D (mm)	T (mm)	kg	Capacity (Litres)		No.	Holes			Max. Pcs/Mtr
							Z2 (total)	Z3 (water)		E (Ø mm)	F (mm)	G (mm)	
S100-90	106	89	62	36	0.9	0.12	0.29	0.19	2	8.5	50	20	15
S130-120	140	114	78	51	1.5	0.35	0.61	0.41	2	8.5	70	22	12
S180-140	185	140	92	56	1.5	0.53	1.29	0.90	2	8.5	100	27	10.5
S230-165	238	165	108	68	2.0	1.01	2.25	1.65	2	11.0	120	34	9
S280-165	289	165	108	68	2.0	1.32	2.91	2.08	3	11.0	80	38	9
S300-180	308	182	117	68	2.0	1.43	3.66	2.46	3	9.0	100*	35	8.13
S300-215	310	217	140	86	2.0	2.05	5.50	4.00	3	11.0	100	38	7.14
S330-215/2.0	340	214	130	81	2.0	2.09	5.51	3.92	3	11.0	120	38	7.14
S330-215/2.5	340	214	130	81	2.5	2.68	5.51	3.92	3	11.0	120	38	7.14
S370-215/2.0	381	214	130	82	2.0	2.38	6.18	4.18	4	11.0	90	38	7.14
S370-215/2.5	381	214	130	82	2.5	2.98	6.18	4.18	4	11.0	90	38	7.14
S450-215	464	214	130	85	2.5	3.40	8.00	5.59	5	11.0	90**	38	7.14

Special holes/thicknesses/wearbands - available on request
 * S300-180 Slotted holes for 100mm centres to 104mm centres.
 ** S450-215 Slotted holes for 88mm centres to 90mm centres.
 Wear band 3.0mm on 1 or 3 sides on request.

TYPE S

HDP / Nylon / Polyurethane



No.	A (mm)	B (mm)	C (mm)	D (mm)	T (mm)	kg	Capacity (Litres)		Recessed Holes			Max. Pcs/Mtr	
							Z2 (total)	Z3 (water)	No.	E (Ø mm)	F (mm)		G (mm)
S100-90HDP-MD	109	90	62	39	4.0	0.06	0.35	0.23	2	8.5	50	17	14.28
S130-120HDP-MD	140	121	81	54	4.7	0.13	0.70	0.50	2	8.5	70	22	11.11
S180-140HDP-MD	190	148	94	55	5.5	0.21	1.30	0.88	2	8.5	100	30	10.5
S230-170HDP-MD	240	175	111	70	5.5	0.36	2.50	1.85	2	11.0	120	38	9
S280-170HDP-MD	290	173	111	75	6.0	0.45	3.00	2.28	3	11.0	80	38	9

No.	A (mm)	B (mm)	C (mm)	D (mm)	T (mm)	kg	Capacity (Litres)		Flat Holes			Max. Pcs/Mtr	
							Z2 (total)	Z3 (water)	No.	E (Ø mm)	F (mm)		G (mm)
S150-110HDP	159	113	78	51	5.2	0.17	0.72	0.49	2	9.0	89	24	12
S180-140HDP	190	146	94	56	6.0	0.22	1.25	0.90	2	9.0	100	30	10.5
S225-140HDP	235	140	94	60	6.0	0.34	1.67	1.16	2	9.0	120	30	10.5
S230-170HDP	240	173	110	70	6.0	0.43	2.32	1.75	2	11.0	120	38	9
S280-170HDP	290	173	113	72	6.0	0.50	3.00	2.28	3	11.0	80	38	9
S300-180HDP/A	314	181	124	81	6.0	0.58	3.85	2.70	3	9.0	102	35	8.13
S300-180HDP/B	314	181	124	81	6.0	0.58	3.85	2.70	3	9.0	100	35	8.13
S350-180HDP	367	181	124	85	7.0	0.79	4.51	3.30	4	9.0	90	35	8.13
S330-215HDP	342	222	141	92	8.5	0.93	5.90	4.51	3	11.0	120	38	7.14
S370-215HDP	380	218	141	90	9.0	1.07	6.30	4.60	4	11.0	90	38	7.14

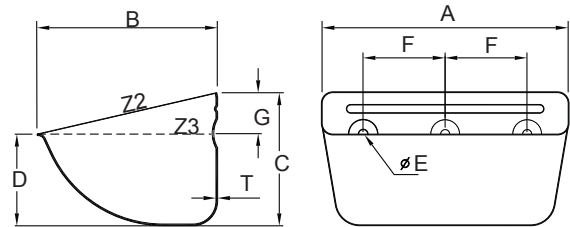
Special holes - available on request.
Plastic buckets require a large flat fender washer (in place of standard washer) between the nut and the inside back of the bucket.

TYPE SPS

The new, extended range of the deep Super Type SPS buckets is the result of intensive research to achieve the maximum individual bucket capacity, while still maintaining the perfect fill and discharge characteristics of the original Type SPS bucket over a wide speed range.

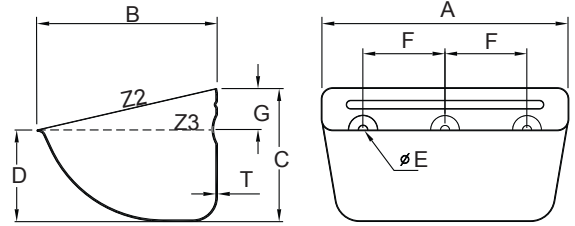
- Versatile bucket, available in many sizes
- Increased Volume, with the same discharge characteristics as the Type SPS bucket
- Less buckets required per metre
- Less bolts and punching required
- Reduced cost for belt & bucket installation

Pressed Seamless Steel / Stainless Steel



No.	A (mm)	B (mm)	C (mm)	D (mm)	T / Kg					Capacity (Litres)		Recessed Holes			Max. Pcs/Mtr		
					1.0mm	1.2mm	1.5mm	2.0mm	2.5mm	3.0mm	Z2 (total)	Z3 (water)	No.	E (Ø mm)		F (mm)	G (mm)
SPS80-80	85	80	58	39	0.11						0.21	0.18	2	8.0	43	16	15.00
SPS100-90	106	89	66	45	0.12	0.18					0.33	0.25	2	8.5	50	20	14.00
SPS100-100	105	97	78	46	0.18						0.42	0.29	2	8.5	50	25	12.00
SPS120-100	125	105	77	53	0.22	0.33					0.58	0.44	2	8.0	67	25	12.00
SPS140-110	146	112	91	40		0.43					0.76	0.41	2	8.5	70	25	10.50
SPS130-120	138	120	90	62		0.30	0.38				0.82	0.64	2	8.5	70	25	10.50
SPS140-120	146	120	90	62		0.32	0.40		0.80		0.87	0.65	2	8.5	70/86*	25	10.50
SPS160-140	166	147	112	78		0.55			1.10	1.58	1.20		2	8.5	100	30	8.60
SPS180-140	187	147	112	78		0.61			1.22	1.77	1.38		2	8.5	100	30	8.60
SPS200-150	205	150	112	77		0.77			1.54	2.00	1.53		2	9.0	100/102*	32	8.60
SPS230-160/A	233	160	122	85		0.86	1.15		1.72	2.71	2.15		3	9.0	70	32	8.00
SPS230-160/B	233	160	122	85		0.86	1.15		1.72	2.71	2.15		2	10.5	120	32	8.00
SPS240-160/A	247	165	130	92		1.35			2.00	3.08	2.40		3	10.5	70/77*	35	7.40
SPS240-160/B	247	165	130	92		1.35			2.00	3.08	2.40		2	10.5	140	35	7.40
SPS240-160/C	247	165	130	92		1.35			2.00	3.08	2.40		2	10.5	120	35	7.40
SPS260-165	262	165	130	92		1.38			2.10	3.28	2.55		3	10.5	77/80*	35	7.40
SPS280-165	288	165	130	93		1.55			2.32	3.64	2.82		3	10.5	80	38	7.40
SPS300-165/A	308	165	135	94		1.65			2.50	3.88	2.90		3	9.0	100/104*	36	7.20
SPS300-165/B	308	165	135	94		1.65			2.50	3.88	2.90		3	11.0	100	36	7.20
SPS330-165	340	165	135	97		1.90			2.85	4.40	3.50		3	11.0	110/120*	38	7.20

TYPE SPS



No.	A (mm)	B (mm)	C (mm)	D (mm)	⚠ T / Kg						Capacity (Litres)		Recessed Holes			Max. Pcs/Mtr	
					1.0mm	1.2mm	1.5mm	2.0mm	2.5mm	3.0mm	Z2 (total)	Z3 (water)	No.	E (Ø mm)	F (mm)		G (mm)
SPS350-165/A	360	165	135	94				2.12		3.20	4.50	3.65	4	9.0	90	38	7.20
SPS350-165/B	360	165	135	94				2.12		3.20	4.50	3.65	3	11	120	38	7.20
SPS200-180	204	182	140	98				1.28			2.84	2.17	2	11.0	110	44	7.00
SPS280-180	290	182	140	95				1.70		2.55	4.50	3.50	3	11.0	80	38	7.00
SPS300-180/A	308	182	140	95				1.80		2.70	4.50	3.50	3	9.0	100/104*	36	7.00
SPS300-180/B	308	182	140	95				1.80		2.70	4.50	3.50	3	11.0	100	36	7.00
SPS330-180	340	182	140	98				2.00			5.20	4.00	3	11.0	110/120*	38	7.00
SPS350-180	362	182	140	98				2.10		3.15	5.50	4.10	3	11.0	120	38	7.00
SPS370-180	385	195	140	95					2.80		6.40	4.90	4	11.0	90	38	7.00
SPS250-215	254	215	162	112				1.86			5.00	3.80	3	11.0	85	49	5.88
SPS280-215	294	215	163	114				1.55	2.86	2.32	6.04	4.70	3	11.0	80	50	5.88
SPS300-215	310	215	163	112				2.32		3.48	6.70	5.20	3	11.0	100	50	5.88
SPS330-215	340	215	163	112					2.97		7.20	5.65	3	11.0	120	50	5.88
SPS350-215	362	215	162	112					3.23		7.60	5.86	3	11.0	120	50	5.88
SPS370-215	381	215	163	112					3.32	4.00	8.60	6.48	4	11.0	90	50	5.88
SPS450-215	464	215	163	112					3.74	4.50	10.10	7.70	5	11.0	88/90*	50	5.88
SPS500-215	515	215	163	112					4.00	4.80	11.25	8.91	5	11.0	100	50	5.88

Special holes/thicknesses/wearbands - available on request

Wear band size: 3.0mm on 1 or 3 sides on request.

* Slotted holes to fit alternate hole centres

TYPE SPS

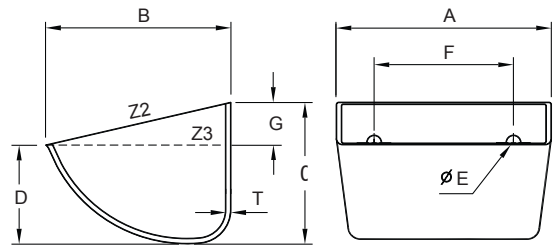
HDP / Nylon / Polyurethane



Super Starco

The new, extended range of the deep Super Starco buckets is the result of intensive research to achieve the maximum individual bucket capacity, while still maintaining the perfect fill and discharge characteristics of the original Starco bucket over a wide speed range.

- Versatile bucket, available in many sizes
- Increased Volume, with the same discharge characteristics as the Starco bucket
- Less buckets required per metre
- Less bolts and punching required
- Reduced cost for belt & bucket installation



No.	A (mm)	B (mm)	C (mm)	D (mm)	T (mm)	kg	Capacity (Litres)		Holes			Max. Pcs/Mtr	
							Z2 (total)	Z3 (water)	No.	E (Ø mm)	F (mm)		G (mm)
SPS80-80 HDP	90	85	63	43	4	0.06	0.24	0.18	2	9.0*	43	18	15.00
SPS100-90 HDP	110	100	67	44	5	0.09	0.38	0.29	2	9.0*	50	20	14.00
SPS120-100 HDP	129	110	80	55	5	0.13	0.59	0.46	2	9.0*	67	25	12.00
SPS130-120 HDP	135	120	85	57	5	0.18	0.70	0.52	2	9.0*	70	25	11.00
SPS140-120 HDP	145	120	90	62	5	0.17	0.80	0.61	2	8.5*	70	25	10.80
SPS160-140 HDP	172	152	113	78	6	0.30	1.58	1.22	2	9.0*	100	30	8.60
SPS180-140 HDP	187	150	112	77	6	0.32	1.77	1.35	2	9.0*	100	30	8.60
SPS200-150 HDP	205	150	112	75	6	0.35	1.82	1.39	2	9.0*	100	32	8.60
SPS200-160 HDP	210	158	115	79	7	0.39	2.09	1.61	2	9.0*	100	32	8.50
SPS240-165 HDP	250	170	132	93	7	0.60	3.15	2.34	2	11.0*	120	35	7.40
SPS280-165 HDP	290	168	132	93	7	0.69	3.60	2.80	3	11.0	80	36	7.40
SPS280-180 HDP	290	185	140	97	7	0.85	4.20	3.30	3	11.0	80	36	7.00
SPS300-180 HDP	316	185	140	97	8	0.92	4.60	3.60	3	11.0	100	36	7.00
SPS300-215 HDP	318	220	168	117	9	1.28	6.60	5.20	3	11.0	100	50	5.88
SPS330-180 HDP	347	185	140	97	8	1.00	5.00	4.00	3	11.0	110/120	38	7.00
SPS330-215 HDP	340	220	168	117	9	1.37	7.17	5.66	3	11.0	120	50	7.00
SPS350-215 HDP	368	220	168	117	9	1.45	7.75	6.12	3/4	11.0	120/90	50	5.88
SPS370-215 HDP	390	220	168	117	9	1.52	8.25	6.52	4	11.0	90	50	5.88
SPS400-215 HDP	420	220	168	117	9	1.54	8.95	7.00	4	11.0	100	50	5.88
SPS450-215 HDP	470	220	165	115	9	1.60	9.50	7.70	5	11.0	90	50	5.88
SPS500-215 HDP	520	220	168	117	9	1.96	11.25	8.91	5	11.0	100	50	5.88

Plastic buckets require a large flat washer of minimum 30mm O/D between the hex nut and the inside of the bucket.

* Recessed Holes

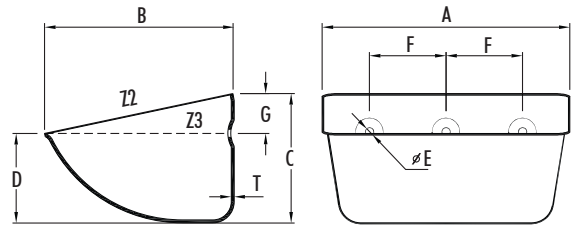
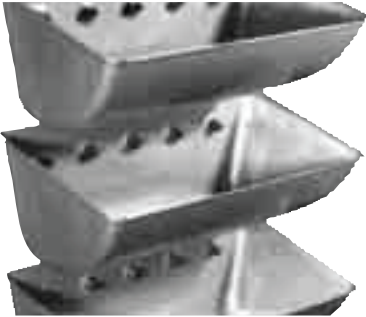
TYPE SJ

TYPE SJ Jumbo

Developed to meet the needs of industrial elevators, particularly cement. Deep drawn solid steel bucket, designed and engineered to replace large fabricated buckets. Suitable for use with both standard rubber and steel cord belting.

- Improved capacity: Wingless design, improves fill and allows closer spacing
- Greater strength/longer life: Solid seamless construction with rounded corners for rigidity. No welds or joints to open up
- Economic solution
- More buckets per metre: More capacity, smaller casing

Pressed Seamless Steel



No.	A (mm)	B (mm)	C (mm)	D (mm)	T (mm)	kg	Capacity (Litres)		Recessed Holes			Max. Pcs/Mtr	
							Z2 total	Z3 (water)	No.	E (Ø mm)	F (mm)		G (mm)
SJ250-250/3	260	260	190	130	4.0	3.5	7.0	5.3	3	13	80	55	5
SJ250-250/4	260	260	190	130	4.0	4.6	7.0	5.3	3	13	80	55	5
SJ330-250/3	340	260	190	130	3.0	4.5	9.6	7.2	3	13	80	55	5
SJ370-250/3	380	260	190	130	3.0	5.1	10.8	8.3	4	13	80	55	5
SJ470-250/3	480	260	190	130	3.0	6.5	14.0	10.5	5	13	80	55	5
SJ330-250/4	340	260	190	130	4.0	6.0	9.6	7.2	3	13	80	55	5
SJ370-250/4	380	260	190	130	4.0	6.1	10.8	8.3	4	13	80	55	5
SJ470-250/4	480	260	190	130	4.0	8.6	14.0	10.5	5	13	80	55	5
SJ470-250/4.7	480	260	190	130	4.7	10.1	14.0	10.5	5	13	80	55	5

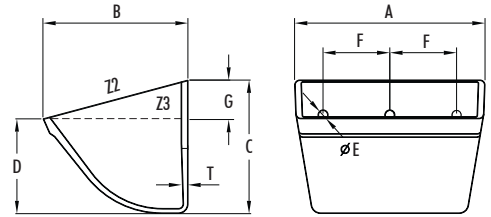
Special holes/thicknesses/wearbands - available on request

TYPE CC-S

A big volume, heavy duty bucket offering greater capacities. Moulded from premium virgin white polymer for ultimate strength and durability.

- Stackable design saves freight and storage costs
- Maximum impact resistance
- Thickest front lip in the grain industry for no bowing and backlegging
- "Iceberg edge"™ ensures clean and consistent discharge
- "Engineered" for longer life and better performance

Stackable CC-S Style
HDP / Nylon / Polyurethane



No.	A (mm)	B (mm)	C (mm)	D (mm)	kg	Capacity (Litres)			Holes			Max. Pcs/Mtr	
						Z2 (total)	Z3+10%	Z3 (water)	No.	E (Ø mm)	F (mm)		G (mm)
CC-S 3x2	85	64	53	35	0.05	0.15	0.12	0.11	To customer specification				15.75
CC-S 4x3	112	89	78	54	0.11	0.39	0.34	0.31		11.25			
CC-S 5x4	135	115	103	72	0.20	0.80	0.63	0.58		8.75			
CC-S 6x4	161	115	103	72	0.23	0.96	0.81	0.74		8.75			
CC-S 7x4	186	115	103	72	0.26	1.13	0.96	0.87		8.75			
CC-S 6x5	163	141	131	93	0.37	1.48	1.27	1.15		7.15			
CC-S 7x5	189	141	131	93	0.41	1.74	1.49	1.35		7.15			
CC-S 8x5	214	141	131	93	0.45	2.00	1.72	1.56		7.15			
CC-S 9x5	240	141	131	93	0.50	2.22	1.88	1.71		7.15			
CC-S 10x5	265	141	131	93	0.54	2.53	2.17	1.97		7.15			
CC-S 11x5	290	141	131	93	0.59	2.78	2.39	2.17		7.15			
CC-S 12x5	316	141	131	93	0.62	3.05	2.62	2.38		7.15			
CC-S 8x6	213	169	154	109	0.56	2.76	2.31	2.10		6.00			
CC-S 9x6	239	169	154	109	0.64	2.95	2.59	2.35		6.00			
CC-S 10x6	264	169	154	109	0.68	3.38	3.03	2.75		6.00			
CC-S 11x6	289	169	154	109	0.72	3.85	3.41	3.10		6.00			
CC-S 12x6	315	169	154	109	0.78	4.30	3.63	3.30		6.00			
CC-S 13x6	340	169	154	109	0.84	4.60	3.96	3.60		6.00			
CC-S 14x6	365	169	154	109	0.90	5.05	4.35	3.95		6.00			
CC-S 10x7	273	200	180	127	1.05	5.12	4.36	3.96		5.25			
CC-S 11x7	299	200	180	127	1.10	5.50	4.73	4.30		5.25			
CC-S 12x7	324	200	180	127	1.20	6.18	5.27	4.79		5.25			

TYPE CC-S

No.	A (mm)	B (mm)	C (mm)	D (mm)	kg	Capacity (Litres)			Holes			Max. Pcs/Mtr
						Z2 (total)	Z3+10%	Z3 (water)	No.	E (Ø mm)	F (mm)	
CC-S 13x7	350	200	180	127	1.28	6.71	5.72	5.20	To customer specification			5.25
CC-S 14x7	375	200	180	127	1.37	7.25	6.18	5.62				5.25
CC-S 15x7	400	200	180	127	1.45	7.76	6.63	6.03				5.25
CC-S 16x7	426	200	180	127	1.53	8.30	7.08	6.44				5.25
CC-S 10x8	275	228	210	149	1.44	6.66	5.71	5.19				4.60
CC-S 11x8	300	228	210	149	1.55	7.35	6.30	5.73				4.60
CC-S 12x8	326	228	210	149	1.66	8.07	6.92	6.29				4.60
CC-S 13x8	351	228	210	149	1.76	8.75	7.51	6.83				4.60
CC-S 14x8	377	228	210	149	1.88	9.47	8.14	7.40				4.60
CC-S 15x8	402	228	210	149	1.97	10.16	8.73	7.94				4.60
CC-S 16x8	427	228	210	149	2.05	10.85	9.33	8.48				4.60
CC-S 18x8	479	228	210	149	2.30	12.28	10.57	9.61				4.60
CC-S 20x8	529	228	210	149	2.50	13.65	11.77	10.70				4.60

**STACKABLE DESIGN
FOR REDUCED SHIPPING & STORAGE COSTS**



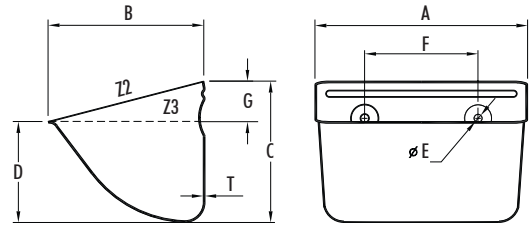
TYPE J

American Grain

A big volume, CC-style steel bucket designed for use with free flowing materials. For use in medium and high speed elevators

- High capacity: Wingless design, improves fill and allows closer spacing on belt
- Greater strength/longer life: Solid seamless construction with rounded corners for rigidity. No welds or joints to open up
- Fully interchangeable with CC style buckets

Pressed Seamless Steel / Stainless Steel



No.	A (mm)	B (mm)	C (mm)	D (mm)	T (mm)	kg	Capacity (Litres)			Recessed Holes			Max. Pcs/Mtr
							Z2 (total)	Z3	Z3+10% (water)	No.	E (Ø mm)	F (mm)	
J64	161	110	100	71	1.2	0.45	1.00	0.85	0.77	To customer specification			8.75
J75	190	138	121	76	1.5	0.69	1.74	1.36	1.24		7.15		
J85	213	141	121	83	1.5	0.82	2.10	1.78	1.62		7.15		
J95	235	137	120	76	1.5	1.02	2.57	1.8	1.63		7.15		
J96	235	160	150	92	2.0	1.46	3.26	2.48	2.25		6.00		
J106	262	160	150	92	2.0	1.66	3.87	2.87	2.61		6.00		
J116	287	163	154	95	2.0	1.85	4.08	3.24	2.95		6.00		
J126	313	160	150	92	2.0	2.03	4.34	3.44	3.13		6.00		
J117	290	191	171	107	2.0	2.10	5.74	4.40	4.00		5.25		
J127	316	191	171	107	2.0	2.24	6.06	4.77	4.34		5.25		
J147	367	191	171	107	2.0	2.49	7.34	5.46	4.96		5.25		
J167	417	191	171	107	2.0	2.83	8.39	6.24	5.67		5.25		
J148	362	210	203	121	2.0	2.89	9.00	7.00	6.36		4.60		
J168	413	210	203	121	2.0	3.40	10.32	8.00	7.26		4.60		

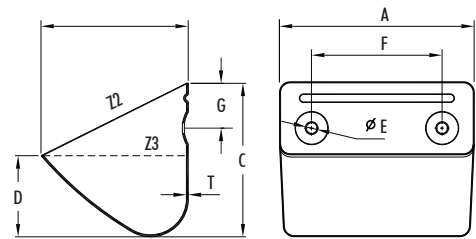
TYPE G

Columbus DIN 15232

Agricultural Pressed Steel Bucket.

- Supplied complete with standard recessed holes
- Ideal for free flowing materials on medium speed elevators

Pressed Steel / Stainless Steel



No.	A* (mm)	B* (mm)	C* (mm)	D* (mm)	T (mm)	kg	Capacity (Litres)		No.	Recessed Holes		
							Z2 (total)	Z3 (water)		E (Ø mm)	F (mm)	G (mm)
STANDARD RANGE												
G80	80	75	80	40	1.0	0.13	0.25	0.16	2	8.0	43	19
G90	90	80	85	45	1.0	0.16	0.33	0.22	2	8.0	46	19
G100	100	90	91	48	1.0	0.18	0.42	0.27	2	8.0	58	23
G110	110	95	95	50	1.0	0.21	0.51	0.33	2	8.0	64	26
G120	120	100	105	55	1.0	0.25	0.70	0.41	2	8.0	67	29
G130	130	105	110	58	1.0	0.30	0.81	0.49	2	8.0	78	32
G140	140	115	117	63	1.0	0.33	1.05	0.62	2	8.0	86	35
G150	150	125	123	66	1.0	0.36	1.21	0.75	2	8.0	87	33
G160/1.5	160	125	126	70	1.5	0.57	1.31	0.89	2	9.5	101	36
G160/2.0	160	125	126	70	2.0	0.76	1.31	0.89	2	9.5	101	35
G180/1.5	180	130	130	76	1.5	0.67	1.62	1.04	2	9.5	110	39
G180/2.0	180	130	130	76	2.0	0.89	1.62	1.04	2	9.5	110	39
G200/1.5	200	140	145	88	1.5	0.84	2.25	1.50	2	9.5	131	45
G200/2.0	200	140	145	88	2.0	1.12	2.25	1.50	2	9.5	131	45
G225/1.5	225	145	153	90	1.5	1.01	2.81	1.80	3	9.5	70	40
G225/2.0	225	145	153	90	2.0	1.30	2.81	1.80	3	9.5	70	40
G250/1.5	250	150	158	92	1.5	1.13	3.15	2.07	3	9.5	77	45
G250/2.0	250	150	158	92	2.0	1.46	3.15	2.07	3	9.5	77	45
G300/1.5	300	155	160	95	1.5	1.35	4.20	2.75	3	9.5	104	48
G300/2.0	300	155	160	95	2.0	1.74	4.20	2.75	3	9.5	104	48
G350/1.5	350	180	190	100	1.5	1.86	6.37	4.03	4	11.0	90	54
G350/2.0	350	180	190	100	2.0	2.35	6.37	4.03	4	11.0	90	54
G400/2.0	400	200	212	112	2.0	3.00	8.17	5.32	4	11.0	100	80
G400/2.5	400	200	212	112	2.5	3.75	8.17	5.32	4	11.0	100	80
G500	500	224	236	125	3.0	6.00	14.50	9.50	5	14.0	100	90
SPECIAL RANGE												
GS350-230	359	232	236	108	2.5	3.85	9.97	5.22	4	12.0	80	90
GS350-240	359	244	236	125	2.5	3.91	10.25	6.80	4	12.0	80	90
GS500/1 HDP	500	226	247	117	9.0	2.35	13.35	6.90				
GS500HDP	500	240	253	117	8.5	2.44	14.58	7.98				

* Note: Dimensions for G Type measured internally in accordance with DIN Norm.

TYPE H

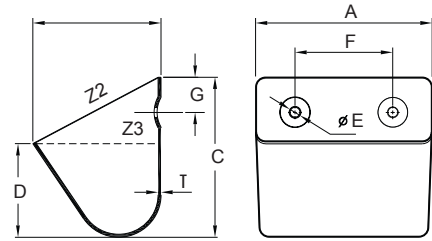
Continental DIN 15233

Industrial Pressed Steel Bucket

- Supplied complete with standard recessed holes
- Low front and open profile

Ideal for handling difficult, sticky industrial materials

**Pressed Seamless Steel /
Stainless Steel**



No.	A* (mm)	B* (mm)	C* (mm)	D* (mm)	T (mm)	Capacity (Litres)			Recessed Holes			
						kg	Z2 (total)	Z3 (Water)	No.	E (Ø mm)	F (mm)	G (mm)
H160	162	140	160	63	2.0	0.98	1.80	0.80	2	9.5	80	56
H200	200	160	180	71	2.0	1.30	2.84	1.29	2	11.5	125	63
H250	253	182	200	80	2.0	1.71	4.45	2.06	3	11.5	80	71
H315/2.0	315	202	224	90	2.0	2.40	6.50	3.20	3	11.5	112	80
H315/3.0	315	202	224	90	3.0	3.60	6.50	3.20	3	11.5	112	80
H400/2.0**	407	240	275	113	2.0	4.00	13.40	6.50	4	11.5	100	90
H400/3.0**	407	240	275	113	3.0	6.00	13.40	6.50	4	11.5	100	90

* Note: Dimensions for H Types measured internally in accordance with DIN Norm.

** Not to DIN Norm

Bucket Elevator Bolt

Euro Bolt

- ISO grade 5.8 (exceeds DIN15237)
- Large bolt head diameter
- Fully threaded
- Available as Zinc plated or stainless steel

Elevator Bolt with Hexnut & Small Washer (Box of 25) - Galvanized

Head	Max.Bolt	Bolt Length								
		Torque	12mm	20mm	25mm	30mm	40mm	45mm	50mm	55mm
M6	8	4110000612	4110000620	4110000625	4110000630	4110000640	4110000645	4110000650	4110000655	4110000665
M8	20	4110000812	4110000820	4110000825	4110000830	4110000840	4110000845	4110000850	4110000855	4110000865
M10	36	4110001012	4110001020	4110001025	4110001030	4110001040	4110001045	4110001050	4110001055	4110001065
M12	65	4110001212	4110001220	4110001225	4110001230	4110001240	4110001245	4110001250	4110001255	4110001265

Elevator Bolt with Hexnut & Small Washer (Box of 25) - Stainless Steel

Head	Max.Bolt	Bolt Length								
		Torque	12mm	20mm	25mm	30mm	40mm	45mm	50mm	55mm
M6	8	4110900612	4110900620	4110900625	4110900630	4110900640	4110900645	4110900650	4110900655	4110900665
M8	20	4110900812	4110900820	4110900825	4110900830	4110900840	4110900845	4110900850	4110900855	4110900865
M10	36	4110901012	4110901020	4110901025	4110901030	4110901040	4110901045	4110901050	4110901055	4110901065
M12	65	4110901212	4110901220	4110901225	4110901230	4110901240	4110901245	4110901250	4110901255	4110901265

REF 70 Elevator Bolts



AVAILABLE IN STEEL / STAINLESS STEEL 304

- Steel – ISO grade 5.8 (exceeds DIN 15237)
- Concave head with 4 lugs on the underside to prevent rotation when tightening
- Hexagon nut and small flat washer included

NOTE: Length of bolt shank measured from under the bolt head - Kg/100

Head		Max. Bolt Torque (Nm)	Bolt Length								
(Ø mm)	D		12mm	20mm	25mm	30mm	40mm	45mm	50mm	55mm	65mm
Ref.	D										
M6	17	8	4110700612	4110700620	4110700625	4110700630	4110700640	4110700645	4110700650	4110700655	4110700665
M8	23	20	4110700812	4110700820	4110700825	4110700830	4110700840	4110700845	4110700850	4110700855	4110700865
M10	27	36	4110701012	4110701020	4110701025	4110701030	4110701040	4110701045	4110701050	4110701055	4110701065
M12	35	65	4110701212	4110701220	4110701225	4110701230	4110701240	4110701245	4110701250	4110701255	4110701265

REF 70

- Stainless Steel

Head		Max. Bolt Torque (Nm)	Bolt Length								
(Ø mm)	D		12mm	20mm	25mm	30mm	40mm	45mm	50mm	55mm	65mm
Ref.	D										
M6	17	8	4110710612	4110710620	4110710625	4110710630	4110710640	4110710645	4110710650	4110710655	4110710665
M8	23	20	4110710812	4110710820	4110710825	4110710830	4110710840	4110710845	4110710850	4110710855	4110710865
M10	27	36	4110711012	4110711020	4110711025	4110711030	4110711040	4110711045	4110711050	4110711055	4110711065
M12	35	65	4110711212	4110711220	4110711225	4110711230	4110711240	4110711245	4110711250	4110711255	4110711265

B REF 70

Large Oval Washer

AVAILABLE IN STEEL/STAINLESS STEEL 304

- Use with Ref 70 bolts in heavy duty applications
- Locates over 4 lugs on bolt head, increasing effective bolt head size and bolt holding
- Belt must be thick enough to absorb the washer and / or the bucket belt holes should be recessed
- Not recommended on pulley diameters of less than 500mm
- Fit the longest part of the oval across the belt width



Large Oval Washer

Ref.	Ø	(mm)	Kg/100
DW01	M6 *	33/45	1.48
DW02	M8 *	37/50	2.04
DW03	M10 *	45/57	2.90
DW04	M12 *	53/63	4.09

*Available in stainless steel

4.3 - Bucket Elevator Belt Clamp

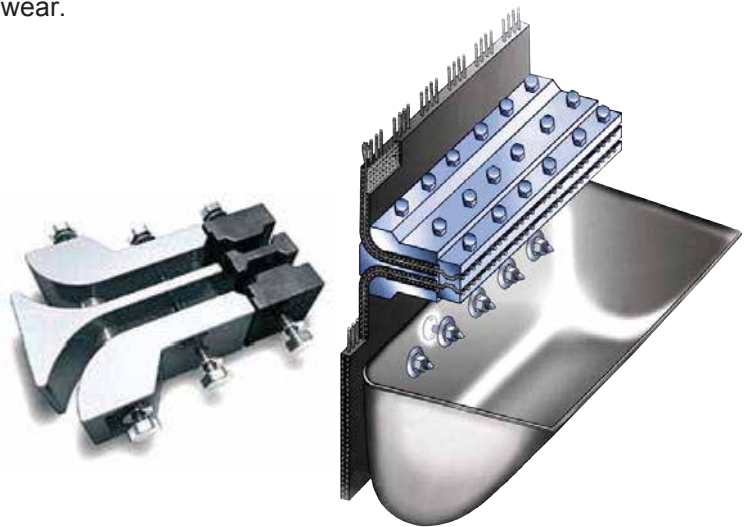


Suitable for Steel Web Belts

Application

The heavy-duty belt clamp securely fastens belting on larger bucket elevators. As the originator of this proven style of belt clamp, designed it from three pieces of extruded aluminum including a center wedge section to minimize belt wear.

4.4 - Belt + Bucket Fixings



FEATURES

- Belts up to 2,500 kN/m
- Extruded aluminum construction (main body) & machined steel (steel cord vise grip section)
- Secured by high tensile M16 bolts and self locking nuts

